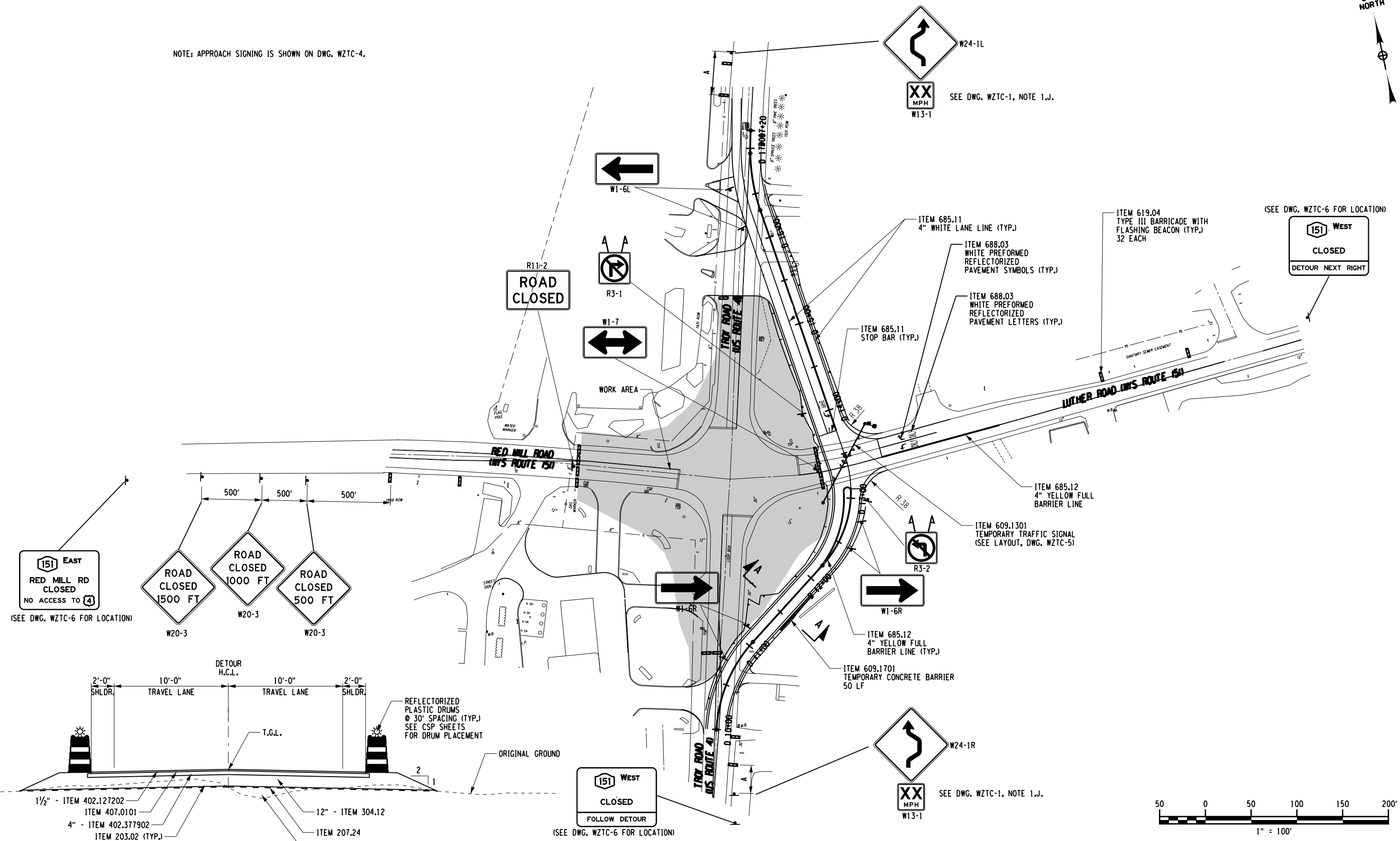


FILE: \$FILES\$ DATE: \$DATE\$ USER: \$USERNAME\$
 DESIGN SUPERVISOR: J. PANGBURN JOB MANAGER: K. KIRCHER DESIGNED BY: C. FARMER CHECKED BY: J. PANGBURN ESTIMATED BY: C. FARMER DRAFTED BY: K. DETRICK CHECKED BY: D. BORJAS

NOTE: APPROACH SIGNING IS SHOWN ON DWG. WZTC-4.



151 EAST
RED MILL RD
CLOSED
NO ACCESS TO 4

ROAD CLOSED 1500 FT
ROAD CLOSED 1000 FT
ROAD CLOSED 500 FT

R11-2
ROAD CLOSED

W1-6L

R3-1

W1-7

W1-6R

W1-6R

W24-1L

XX MPH
W13-1

SEE DWG. WZTC-1, NOTE 1.J.

ITEM 685.11
4" WHITE LANE LINE (TYP.)

ITEM 688.03
WHITE PREFORMED
REFLECTORIZED
PAVEMENT SYMBOLS (TYP.)

ITEM 688.03
WHITE PREFORMED
REFLECTORIZED
PAVEMENT LETTERS (TYP.)

ITEM 685.11
STOP BAR (TYP.)

ITEM 619.04
TYPE III BARRICADE WITH
FLASHING BEACON (TYP.)
32 EACH

(SEE DWG. WZTC-6 FOR LOCATION)

151 WEST
CLOSED
DETOUR NEXT RIGHT

ITEM 685.12
4" YELLOW FULL
BARRIER LINE

ITEM 609.1301
TEMPORARY TRAFFIC SIGNAL
(SEE LAYOUT, DWG. WZTC-5)

R3-2

ITEM 685.12
4" YELLOW FULL
BARRIER LINE (TYP.)

ITEM 609.1701
TEMPORARY CONCRETE BARRIER
50 LF

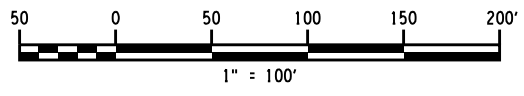
W24-1R

XX MPH
W13-1

SEE DWG. WZTC-1, NOTE 1.J.

151 WEST
CLOSED
FOLLOW DETOUR

(SEE DWG. WZTC-6 FOR LOCATION)

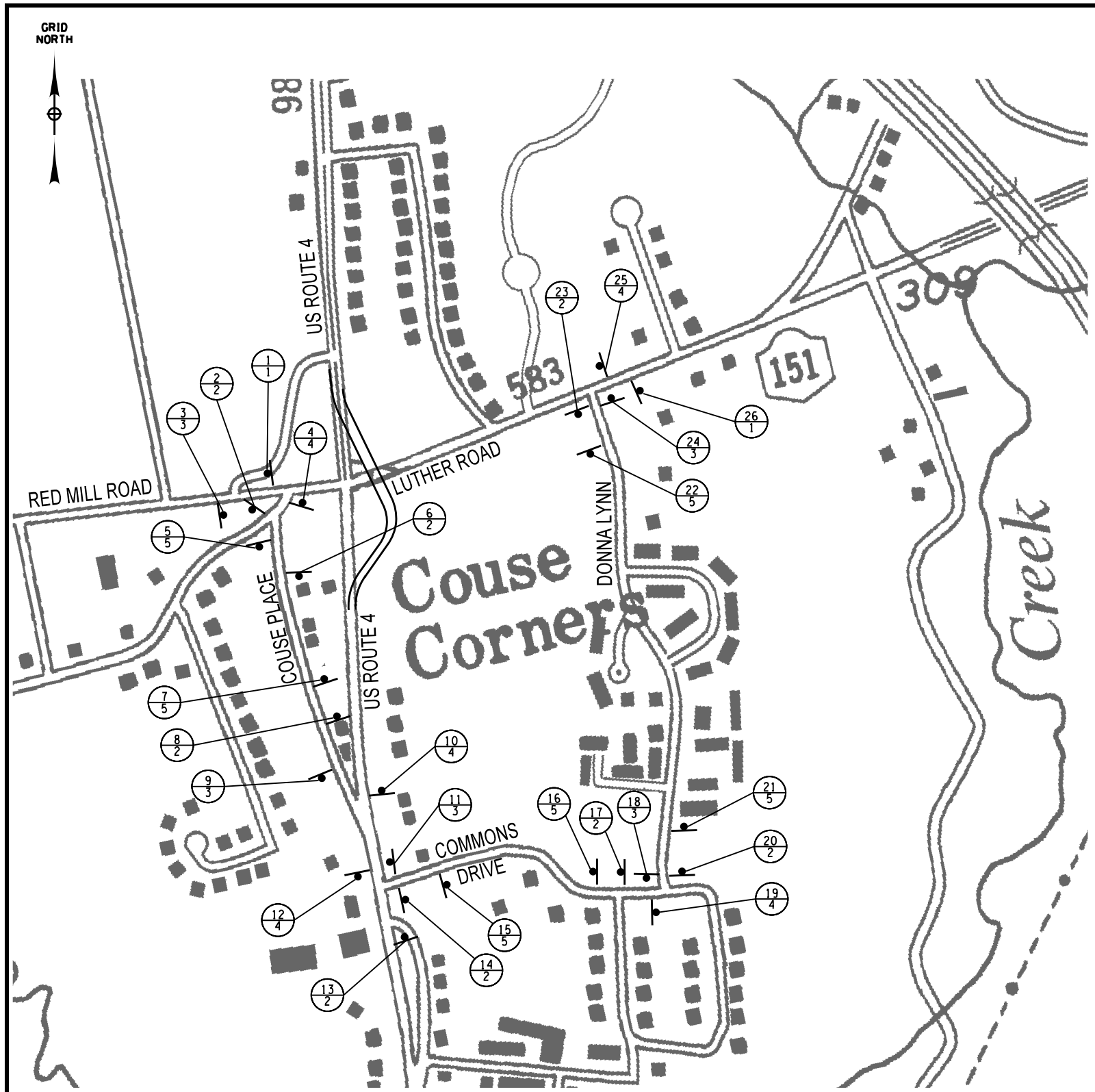


TYPICAL DETOUR
(NOT TO SCALE)

NOTE: NUCLEAR DENSITY MONITORING NOT REQUIRED FOR TEMPORARY DETOUR PAVEMENT.

| | | | | | | |
|--|---|---------------------------|---------|--|---|-----------------------|
| AS BUILT REVISIONS DESCRIPTION OF WORK: | INTERSECTION IMPROVEMENTS TO | P.I.N. 1MB014 | BRIDGES | CULVERTS | ALL DIMENSIONS IN ft UNLESS OTHERWISE NOTED | Creighton Manning |
| | US ROUTE 4 AND NYS ROUTE 151 (SH 981, 102, 583) (COUSE CORNERS ROUNDABOUT) | | | | | |
| SIGNATURE _____ | TOWN OF EAST GREENBUSH | COUNTY: RENSSELAER COUNTY | | NEW YORK STATE DEPARTMENT OF TRANSPORTATION REGION 1 | | |
| DATE _____ | DOCUMENT NAME: \$FILES\$ | | | | | |

FILE: F:\Projects\2009\109-100 Couse Corners\cadd\09-100-wz-09.dgn
 DATE: 5/26/2011
 USER: cfarmer
 DESIGN SUPERVISOR: J. PANGBURN
 JOB MANAGER: K. KIRCHER
 DESIGNED BY: C. FARMER
 CHECKED BY: C. FARMER
 ESTIMATED BY: J. PANGBURN
 DRAFTED BY: K. DETRICK
 CHECKED BY: D. BORJAS



| LEGEND | |
|--------|--|
| SYMBOL | DESCRIPTION |
| | NEW SIGN LOCATION NUMBER TEXT NUMBER |

NOTE:
 1. SIGN LOCATIONS AS SHOWN ON PLANS ARE APPROXIMATE. THE CONTRACTOR SHALL RELOCATE EXISTING SIGNS AND INSTALL NEW SIGNS IN ACCORDANCE WITH THE MUTCD AND NYS SUPPLEMENT. THE EIC SHALL CONTACT THE REGIONAL TRAFFIC ENGINEERING AND SAFETY GROUP WITH QUESTIONS. PRICE FOR BIKE DETOUR SIGNAGE TO BE INCLUDED UNDER ITEM 619.01.

| TEXT NUMBER | LOCATION NUMBER | TEXT | M.U.T.C.D. NUMBER | NOTE |
|-------------|-------------------------------|------|-------------------|------|
| 1 | 1,26 2 | | M1-8 | |
| 2 | 2,6,8,13,14, 17,20,23 8 | | W11-1 W16-1 | |
| 3 | 3,9,11, 18,24 5 | | M1-8 M6-1R | |
| 4 | 4,10,12, 19,25 5 | | M1-8 M6-1L | |
| 5 | 5,7,15,16, 21,22 6 | | M1-8 M6-3 | |

| | | | | | | |
|--|---|---------------------------------------|---------|----------|---|--|
| AS BUILT REVISIONS DESCRIPTION OF WORK: | INTERSECTION IMPROVEMENTS TO US ROUTE 4 AND NYS ROUTE 151 (SH 981, 102, 583) (COUSE CORNERS ROUNDABOUT) | P.I.N. 1MB014 | BRIDGES | CULVERTS | ALL DIMENSIONS IN ft UNLESS OTHERWISE NOTED | DRAWING NO. WZTC-9 SHEET NO. 19A OF 95 |
| SIGNATURE _____ DATE _____ | TOWN OF EAST GREENBUSH COUNTY: RENSSELAER COUNTY | FINAL PLANS SEE COVER FOR STAMP | | | WORK ZONE TRAFFIC CONTROL BIKE DETOUR SIGNING PLAN | |
| DOCUMENT NAME: 09-100-wz+09.dgn | | | | | | NEW YORK STATE DEPARTMENT OF TRANSPORTATION REGION 1 |